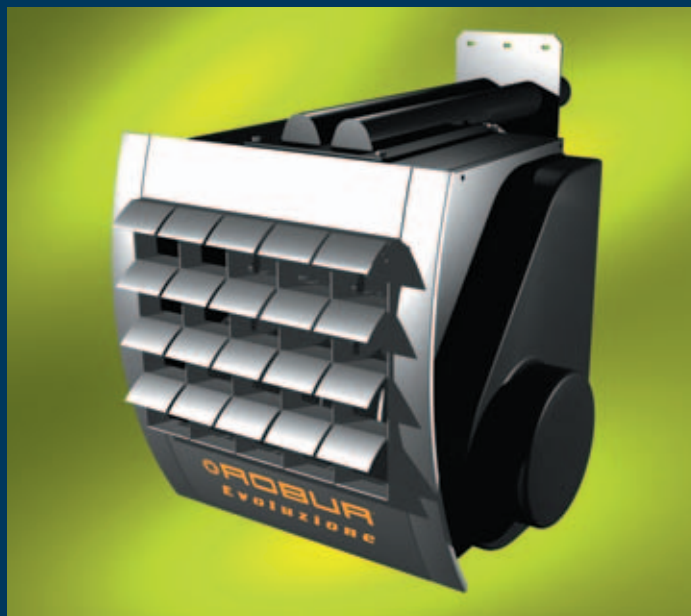


GAS FIRED UNIT HEATERS



Heater with integrated top wall support (optional)



Top Wall support



Revolving wall support bracket



Tubular brackets

- New **Evolutione** gas fired unit heaters are available in 4 models: from 19.3 to 62.8 kW.
- 38 dB(A): is the "silence" of **Evolutione** (mod. E32).
- Automatic regulation of the heat power and ventilation, optimum comfort, maximal savings, lowest noise level.
- Programming controls and remote control.
- Absolutely simplified installations.
- Aluminium revolving louvers.
- Just 36 ppm of NOx emission (mod. E32).

Evolutione

HEATING FOR INDUSTRIAL AND COMMERCIAL AREA



 **ROBUR**[®]
COSCIENZA ECOLOGICA

Technical Characteristics

| MODEL | | U.M. | E32 | E43 | E52 | E72 |
|---|---------------------------|-------------------|---------------|-------------|-------------|-------------|
| Nominal heat input | (1 st speed) | kW | 26 | 37.1 | 48.3 | 69 |
| Nominal heat output | (1 st speed) | kW | 24.2 | 34.2 | 44.5 | 62.8 |
| Reduced heat output | (2 nd speed) | kW | 19.3 | 27.4 | 35.6 | 50.2 |
| Efficiency | | % | 93 | 92 | 92 | 91 |
| Air flow ⁽¹⁾ | (1 st speed) | m ³ /h | 2300 | 3400 | 4200 | 6000 |
| | (2 nd speed) | m ³ /h | 1900 | 2700 | 3400 | 5100 |
| Temperature rise | (1 st speed) | K | 31.2 | 29.4 | 31 | 31 |
| | (2 nd speed) | K | 30.2 | 29.8 | 30.7 | 29.2 |
| Nominal Gas rate ⁽²⁾ | Natural gas | m ³ /h | 2.75 | 3.93 | 5.11 | 7.30 |
| | L.P.G. G30/L.P.G. G31 | kg/h | 2.05 - 2.01 | 2.93 - 2.90 | 3.81 - 3.74 | 5.44 - 5.34 |
| Reduced Gas rate ⁽²⁾ | Natural gas | m ³ /h | 2.20 | 3.15 | 4.09 | 5.84 |
| | L.P.G. G30/L.P.G. G31 | kg/h | 1.64 - 1.61 | 2.34 - 2.30 | 3.05 - 2.99 | 4.35 - 4.28 |
| Air/Exhaust pipe diameter | | mm | 80 | 80 | 80 | 80 |
| Electrical supply | | | 230 V - 50 Hz | | | |
| Total electrical load | | W | 250 | 350 | 420 | 800 |
| Throw at first speed ⁽³⁾ (residual air velocity 1 m/s) | | m | 14 | 20 | 22 | 26 |
| Noise level at 6 m distance (1 st speed) | in an open field | dB(A) | 38 | 40 | 42 | 43 |
| | in a typical installation | dB(A) | 48 | 52 | 56 | 57 |
| Noise level at 6 m distance (2 nd speed) | in an open field | dB(A) | 36 | 37 | 38 | 41 |
| | in a typical installation | dB(A) | 45 | 47 | 51 | 54 |
| Weight | | kg | 60 | 66 | 74 | 86 |

(1) At 20°C - 1013 mbars (2) At 15°C - 1013 mbars (3) Values measured in open field. Throw depends the height on the building, ambient temperature and roof isolation and can be 2-3 times bigger than indicated values.

Due to continuous product innovation and development, Robur reserves the right to change product specification without prior notice.

Wide Installation Possibilities

The Unit Gas Heaters *Evoluzione* are certified in order to create, by using the assembly of ducts, elements and terminals proposed by ROBUR, installation of the "C" type (air supply and exhaust gases are external) or "B" type (air supply from room and exhaust gas are external).

TYPE C13 Room sealed combustion circuit appliance (air supply, combustion chamber and flue exhaust) with inlet air supply and outlet of exhaust gases, either concentric or separated ducts on the WALL. With top support (fig. 1) or revolving base support (fig. 2).

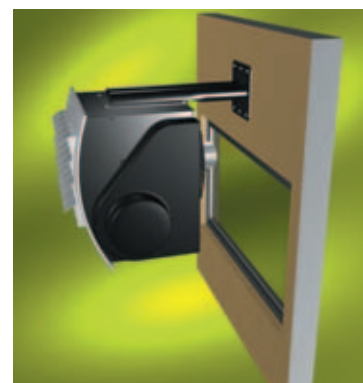
TYPE C33 Room sealed combustion circuit appliance with inlet air supply and outlet of exhaust gases, either concentric or separated ducts on the ROOF with top support (fig. 3).

TYPE C53 Room sealed combustion circuit appliance with inlet air supply and outlet of exhaust gases by using separated ducts and terminals on different WALLS with revolving base support (fig. 4).

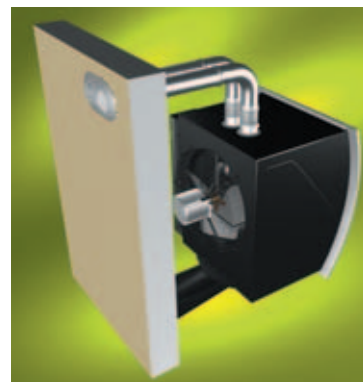
TYPE C63 Room sealed circuit appliance sold without the terminal or the combustion air supply and exhaust gases ducts.

TYPE B23 This appliance must be connected to a flue which draws the exhaust gases to the outside (on the WALL or on the ROOF) of the room containing the appliance.

Robur offers a complete range of accessories for "C" or "B" type of installation.



TYPE C13 (fig. 1)



TYPE C13 (fig. 2)



TYPE C33 (fig. 3)



TYPE C53 (fig. 4)

ROBUR
COSCIENZA ECOLOGICA
ROBUR S.p.A.

Via Parigi 4/6 - 24040 Verdellino/Zingonia (Bg)
Tel. +39-035-888.111 - Fax +39-035-48.21.334
www.robur.it - exportvendite@robur.it